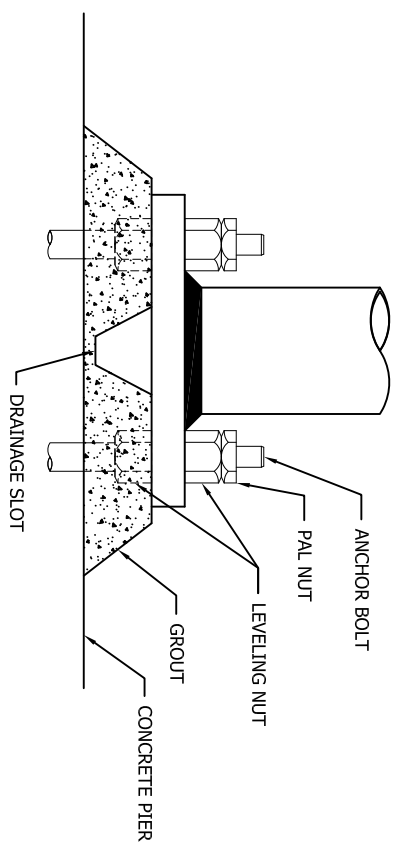


NOTE: ANCHOR BOLT ORIENTATION SHOWN BELOW IS FOR REFERENCE ONLY. ACTUAL ANCHOR BOLT ORIENTATION MAY VARY.

NOTE: HOLES FOR ANCHOR BOLTS IN WOODEN BOARDS MUST BE SAME DIAMETER AS THE ANCHOR BOLTS BEING USED.

**ANCHOR BOLT SETTING PROCEDURE**  
 SET TEMPLATE OVER ANCHOR BOLTS BEFORE POURING CONCRETE.  
 CHECK REQUIRED ANCHOR BOLT PROJECTION TO MATCH FOUNDATION DRAWING. AFTER CONCRETE HAS SET, REMOVE TEMPLATE. SET TOWER IN PLACE, USING LEVELING NUTS TO PLUMB TOWER. FINALLY, GROUT UNDER FLANGE PLATES AND PROVIDE FOR DRAINAGE ON ALL THREE TOWER LEGS.



|                   |                            |              |     |
|-------------------|----------------------------|--------------|-----|
| FILE NO.          |                            | Standard-SSV |     |
| REVISIONS         |                            |              |     |
| REV.              | DESCRIPTION                | DWN          | CHK |
| 4                 | REWORK INTO AUTOCAD FORMAT | NBS          | JOM |
| DATE: 3/4/01/2007 |                            | NBS          | HA  |

|               |  |  |
|---------------|--|--|
| DWG REFERENCE |  |  |
|               |  |  |
|               |  |  |
|               |  |  |
|               |  |  |

**ROHN**  
 PRODUCTS  
 6718 WEST PLANK ROAD  
 PEORIA, IL 61604  
 TOLL FREE 800-772-ROHN

THIS DRAWING IS THE PROPERTY OF ROHN. IT IS NOT TO BE REPRODUCED, COPIED OR TRACKED IN WHOLE OR IN PART WITHOUT OUR WRITTEN CONSENT.

|  |         |        |             |
|--|---------|--------|-------------|
| ANCHOR BOLT LAYOUT<br>PROCEDURE FOR SSV TOWERS |         |        |             |
| DWN:   | OH      | CHK'D: | TWS         |
| ENGR:  | RDM     | DATE:  | OCT/11/1971 |
| DRAWING NO.:                                   | C711017 |        | REV.:       |
|  |         |        | 4           |