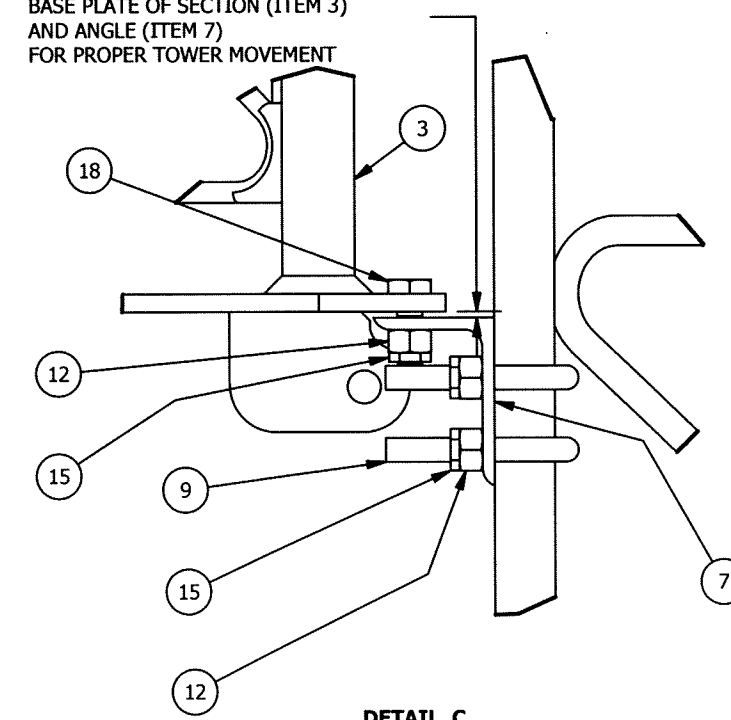


P/N: 55FK-60				
ITEM	QTY	PART NUMBER	DESCRIPTION	DWG
1	1	KFBP001	BASE PLATE 1.00X1.71'X1.83'	N/A
2	1	KFSEC001	SECTION WELDMNT FOR KFSEC001	N/A
3	1	KFSEC002	55G BASE FOR FLDOVR TWR	N/A
4	4	55G	SECTION ASSY 55G 10' STD TOWER	C630655
5	1	KS538X	SECTION 45GSRHB 10' 1.25"DIA	N/A
6	1	55GXFK	SECTION 55G 10' STD TOWER HDG	N/A
7	1	KFANG003	ANGLE SUPPORT L3.5X2.5X1.67'	N/A
8	1	290040	THREADED ROD 3/4(-10)X24.00"	N/A
9	4	JR813	U-BOLT 1/2 X 1-1/4 HDG	N/A
10	6	210016G	BOLT 7/16 X 2-1/2 HCS G5 HDG	N/A
11	2	230020	NUT HVY HEX 3/4 DH TO HDG	N/A
12	36	110143	HEX NUT 1/2 (13 UNC) 2H GAL	N/A
13	6	230009	NUT 7/16 HEX FIN TO HDG	N/A
14	2	110162	NUT 3/4 ( JAM -PAL ) HDG	N/A
15	36	110160	NUT 1/2 ( JAM - PAL ) HDG	N/A
16	12	210020G	BOLT 1/2 X 2 HSB A325 HDG	N/A
17	12	210024G	BOLT 1/2 X 2-1/2 HSB A325 HDG	N/A
18	4	210018G	BOLT 1/2 X 1-1/2 HSB A325 HDG	N/A
19	12	110202	HARDENED WASHER 1/2 (F436)	N/A
20	2	75CTLFG/2H	LOCK NUT 3/4 A563 DH HDG	N/A
21	1	KFWINCHA	WINCH ASSY FOR FOLD OVER TWRS	KFWINCHA

1/8" GAP MUST BE MAINTAINED BETWEEN  
BASE PLATE OF SECTION (ITEM 3)  
AND ANGLE (ITEM 7)  
FOR PROPER TOWER MOVEMENT



FILE NO.

FOR SAMPLE ONLY

**ROHN**  
PRODUCTS, LLC

P.O. BOX 5999  
PEORIA, IL 61601-5999  
TOLL FREE 800-727-ROHN

THIS DRAWING IS THE PROPERTY OF ROHN. IT IS NOT TO BE  
REPRODUCED, COPIED OR TRACED IN WHOLE OR IN PART WITHOUT  
OUR WRITTEN CONSENT.

60' FOLD OVER TOWER ASSY

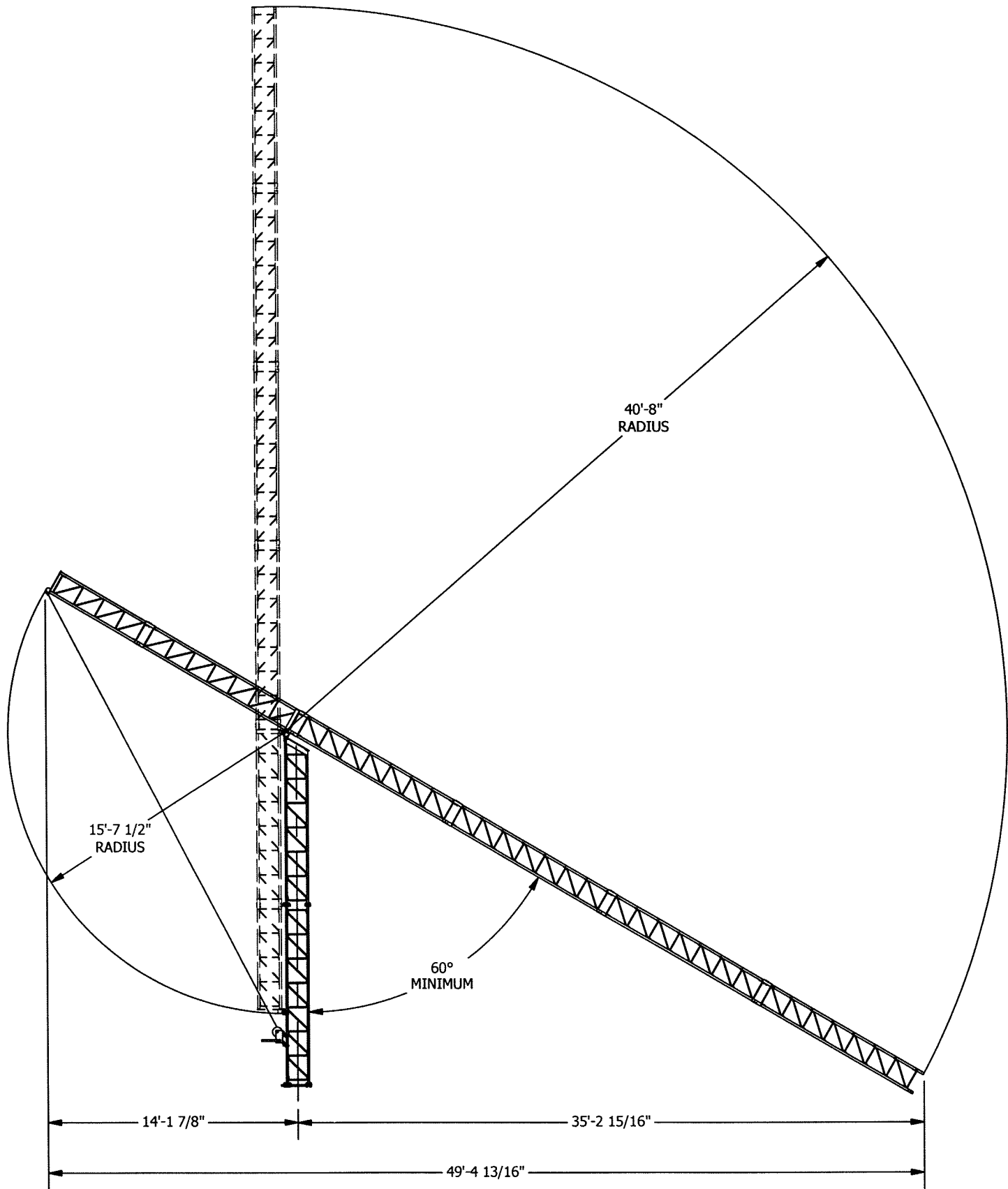
DWN: LGC    CHK'D:    DATE: 3/16/2011

ENG'R:    SHEET 1 OF 2

DRAWING NO: 55FK-60    REV: 0

TOTAL FACTORED REACTIONS

TOTAL AXIAL LOAD: = 1.7 KIPS  
TOTAL SHEAR: = 1.9 KIPS  
TOTAL OVERTURNING  
MOMENT: = 54.8 FT-KIPS



WINCH WARNINGS

1. FOLLOW WINCH INSTRUCTIONS AND WARNINGS PROVIDED BY THE WINCH MANUFACTURER.
2. TOWER MUST BE SECURELY FASTENED TO STATIONARY TOWER OR SECURED IN COMPLETE FOLDED POSITION PRIOR TO LEAVING WINCH.
3. BEFORE OPERATING WINCH, INSPECT TOWER AND WINCH FOR LOOSE OR DAMAGED PARTS.

TOWER WARNINGS

1. DO NOT INSTALL TOWER NEAR OVERHEAD POWER LINES. CONTACT WITH OVERHEAD LINES MAY CAUSE DEATH.
2. STAND CLEAR OF TOWER TOP AND TOWER BASE WHILE TOWER IS BEING ROTATED
3. TOWER MUST BE LOCKED SECURELY IN THE UPRIGHT POSITION PRIOR TO DETACHING WINCH LINE.
4. TOWER IS NOT INTENDED FOR CLIMBING. DO NOT CLIMB THIS STRUCTURE.
5. DO NOT OPERATE WINCH WHEN WIND SPEEDS EXCEED 10 MPH.
6. WHEN LOWERING TOWER, TAKE CAUTION TO PROTECT THE TOWER TOP AND ANTENNAS FROM DAMAGE DUE TO POSSIBLE CONTACT WITH THE GROUND. ADDITIONAL SUPPORTS MAY BE REQUIRED AT THE END OF THE TOWER WHILE LOWERING TO PREVENT DAMAGE TO THE ANTENNAS.

GENERAL NOTES:

1. ROHN PRODUCTS, LLC TOWER DESIGNS CONFORM TO ANSI/TIA-222-G UNLESS OTHERWISE SPECIFIED UNDER TOWER DESIGN LOADING.
2. ANTENNAS AND LINES INSTALLED ON TOWER ARE PROVIDED BY OTHERS UNLESS OTHERWISE SPECIFIED.
3. THE DESIGN LOADING CRITERIA INDICATED HAS BEEN PROVIDED TO ROHN. THE DESIGN LOADING CRITERIA HAS BEEN ASSUMED TO BE BASED ON SITE-SPECIFIC DATA IN ACCORDANCE WITH ANSI/TIA-222-G AND MUST BE VERIFIED BY OTHERS PRIOR TO INSTALLATION.
4. A NUT LOCKING DEVICE IS PROVIDED FOR ALL TOWER AND ANCHOR BOLTS.
5. DESIGN ASSUMES LEVEL GRADE AT TOWER SITE.
6. WORK SHALL BE IN ACCORDANCE WITH ANSI/TIA-222-G, "STRUCTURAL STANDARDS FOR STEEL ANTENNA TOWERS AND ANTENNA SUPPORTING STRUCTURES".
7. TOLERANCE ON TOWER STEEL HEIGHT IS EQUAL TO PLUS 1% OR MINUS 1/2%.
8. PURCHASER SHALL VERIFY THE INSTALLATION IS IN CONFORMANCE WITH LOCAL, STATE, AND FEDERAL REQUIREMENTS FOR OBSTRUCTION MARKING AND LIGHTING.
9. TOWER MEMBER DESIGN DOES NOT INCLUDE STRESSES DUE TO ERECTION SINCE ERECTION EQUIPMENT AND CONDITIONS ARE UNKNOWN. DESIGN ASSUMES COMPETENT AND QUALIFIED PERSONNEL WILL ERECT THE TOWER.
10. DESIGN ASSUMES THAT, AS A MINIMUM, MAINTENANCE AND INSPECTION WILL BE PERFORMED OVER THE LIFE OF THE STRUCTURE IN ACCORDANCE WITH ANSI/TIA-222-G.
11. ALL TOWER ACCESSORIES AND/OR MOUNTS THAT ARE NOT SHOWN IN B.O.M., TO BE SUPPLIED BY OTHERS.
12. TOWER ORIENTATION TO BE DETERMINED BY OTHERS.
13. FOUNDATIONS SHALL BE DESIGNED TO SUPPORT THE REACTIONS SHOWN FOR THE CONDITIONS EXISTING AT THE SITE.
14. CALL ROHN PRODUCTS, LLC FOR REPLACEMENT OF WARNING LABELS

FILE NO.

FOR SAMPLE ONLY



P.O. BOX 5999  
PEORIA, IL 61601-5999  
TOLL FREE 800-727-ROHN

THIS DRAWING IS THE PROPERTY OF ROHN. IT IS NOT TO BE REPRODUCED, COPIED OR TRACED IN WHOLE OR IN PART WITHOUT OUR WRITTEN CONSENT.

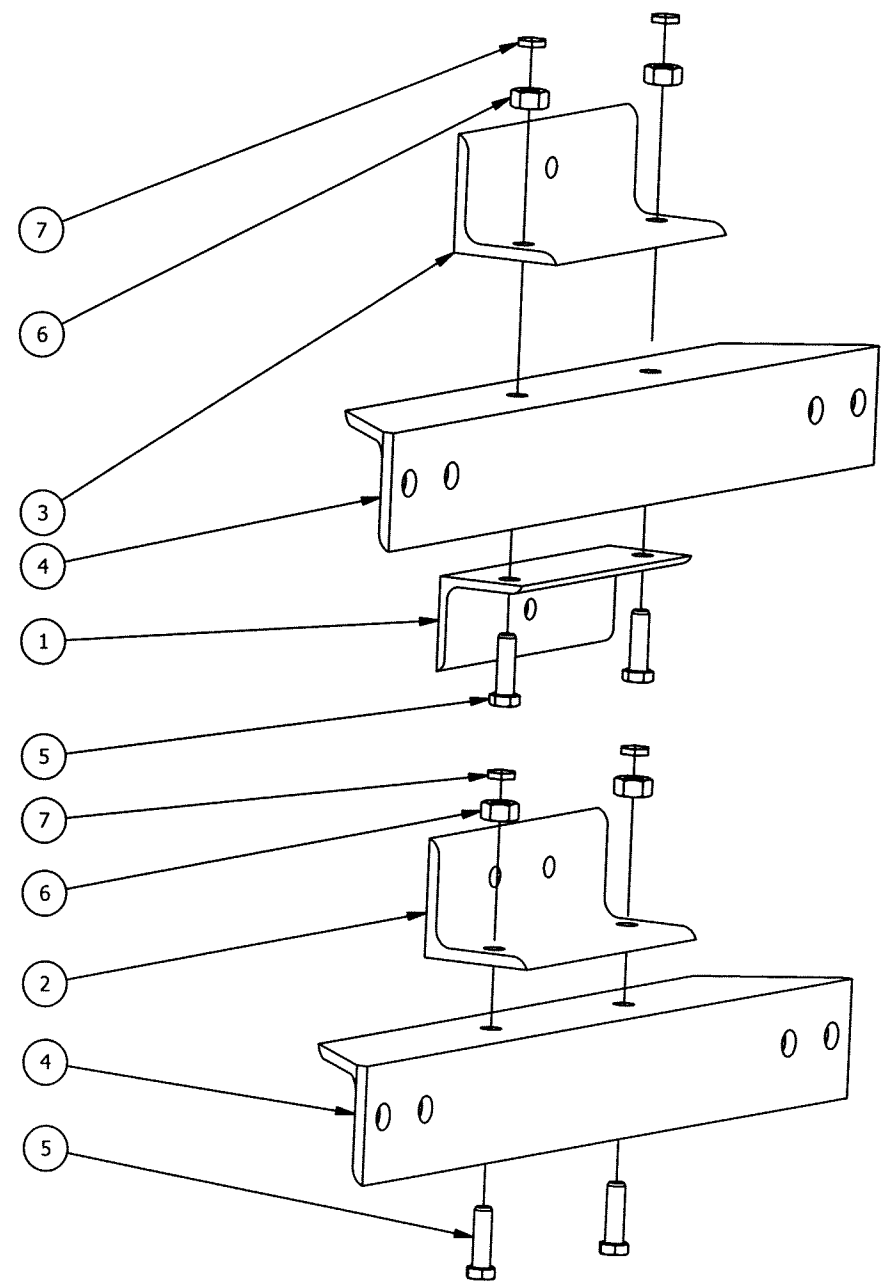
60' FOLD OVER TOWER ASSY

FOUNDATION OPTIONS		
P/N	DESCRIPTION	DWG #
55FK-FDNMAT	FOUNDATION DETAIL (MAT)	55FK-FDNMAT
55FK-FDNDP	FOUNDATION DETAIL (DRILL PIER)	55FK-FDNDP

DWN: LGC    CHK'D:    DATE: 3/16/2011

ENG'R:    SHEET 2 OF 2

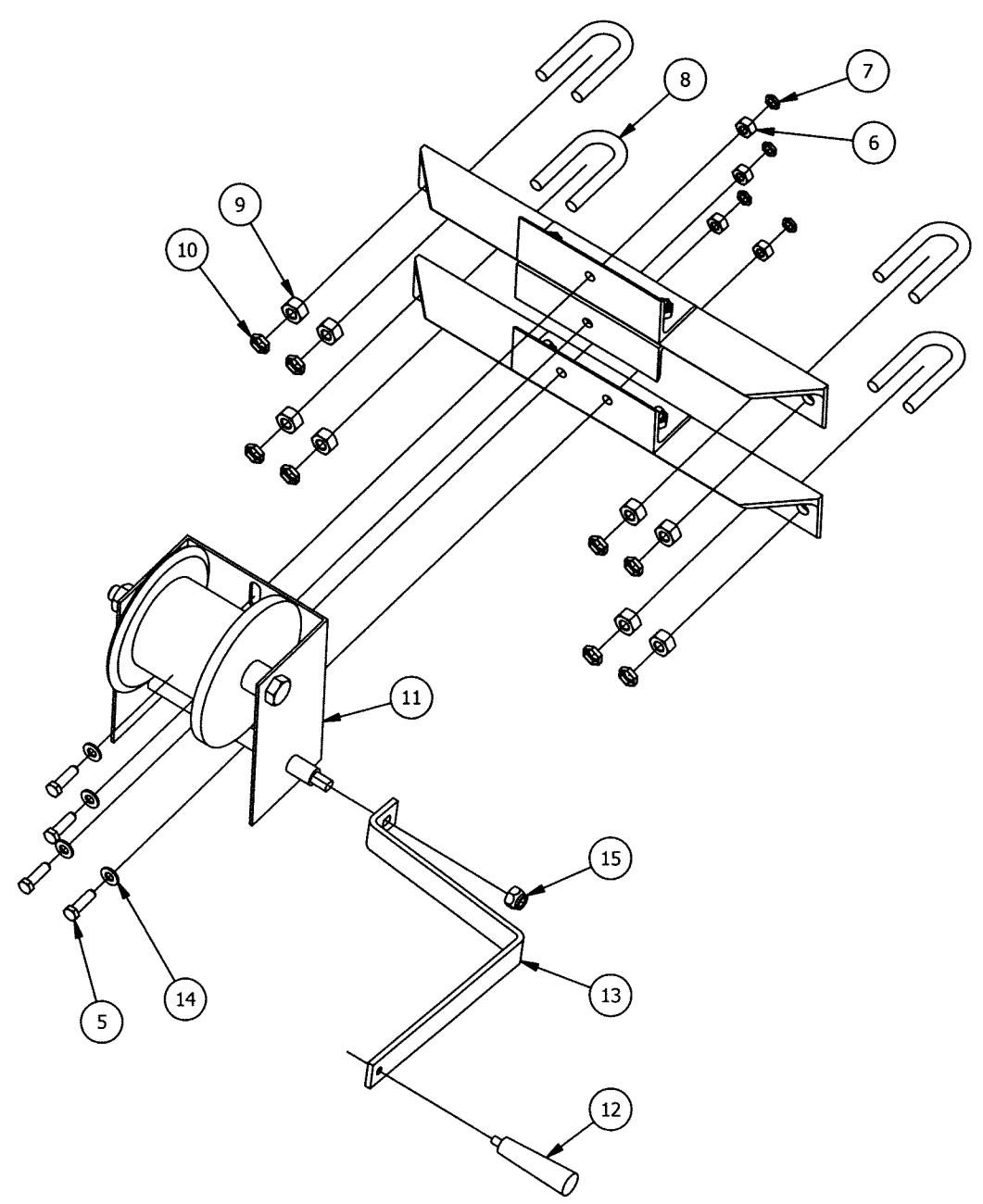
DRAWING NO: 55FK-60    REV: 0



ASSEMBLE FIRST


**NOTE:**  
\*1) FOLLOW WINCH INSTRUCTIONS AND WARNINGS PROVIDED BY WINCH MANUFACTURER FOR CABLE INSTALLATION.

BILL OF MATERIALS			
ITEM	QTY	PART NUMBER	DESCRIPTION
1	1	KFANG007	ANGLE SUPP L2.00X2.00X.19X7.00
2	1	KFANG008	ANGLE SUPPORT L2.5X2.5X.25
3	1	KFANG006	ANGLE SUPP L2.5X2.5X.25X7.00"
4	2	KFANG005	ANGEL SUPP L2.5X2.5X.25X1.33'
5	8	210005G	BOLT 3/8 X 1-1/4 HCS G5 HDG
6	8	230005	NUT HVY HEX 3/8 GR 2H HDG
7	8	110159	NUT 3/8 ( JAM - PAL ) HDG
8	4	JR813	U-BOLT 1/2 X 1-1/4 HDG
9	8	110143	HEX NUT 1/2 (13 UNC) 2H GAL
10	8	110160	NUT 1/2 ( JAM - PAL ) HDG
11	1	KFWINCH	WINCH BOX ASSEMBLY
12	1	WINCHHANDLE	ROTATING HANDLE FOR WINCH
13	1	WINCHHANDLEEXT	HANDLE EXTENSION FOR WINCH
14	4	250008G	WASHER 3/8 FLAT HDG F436
15	1	WINCHHANDLENUT	NUT FOR WINCH HANDLE
* 16	1	WINCHCABLE	WINCHCABLE



FILE NO.

FOR SAMPLE ONLY

  
PRODUCTS, LLC  
P.O. BOX 5999  
PEORIA, IL 61601-5999  
TOLL FREE 800-727-ROHN

THIS DRAWING IS THE PROPERTY OF ROHN. IT IS NOT TO BE REPRODUCED, COPIED OR TRACED IN WHOLE OR IN PART WITHOUT OUR WRITTEN CONSENT.

WINCH ASSEMBLY  
FOR FOLD OVER TOWERS

DWN:  
LGC

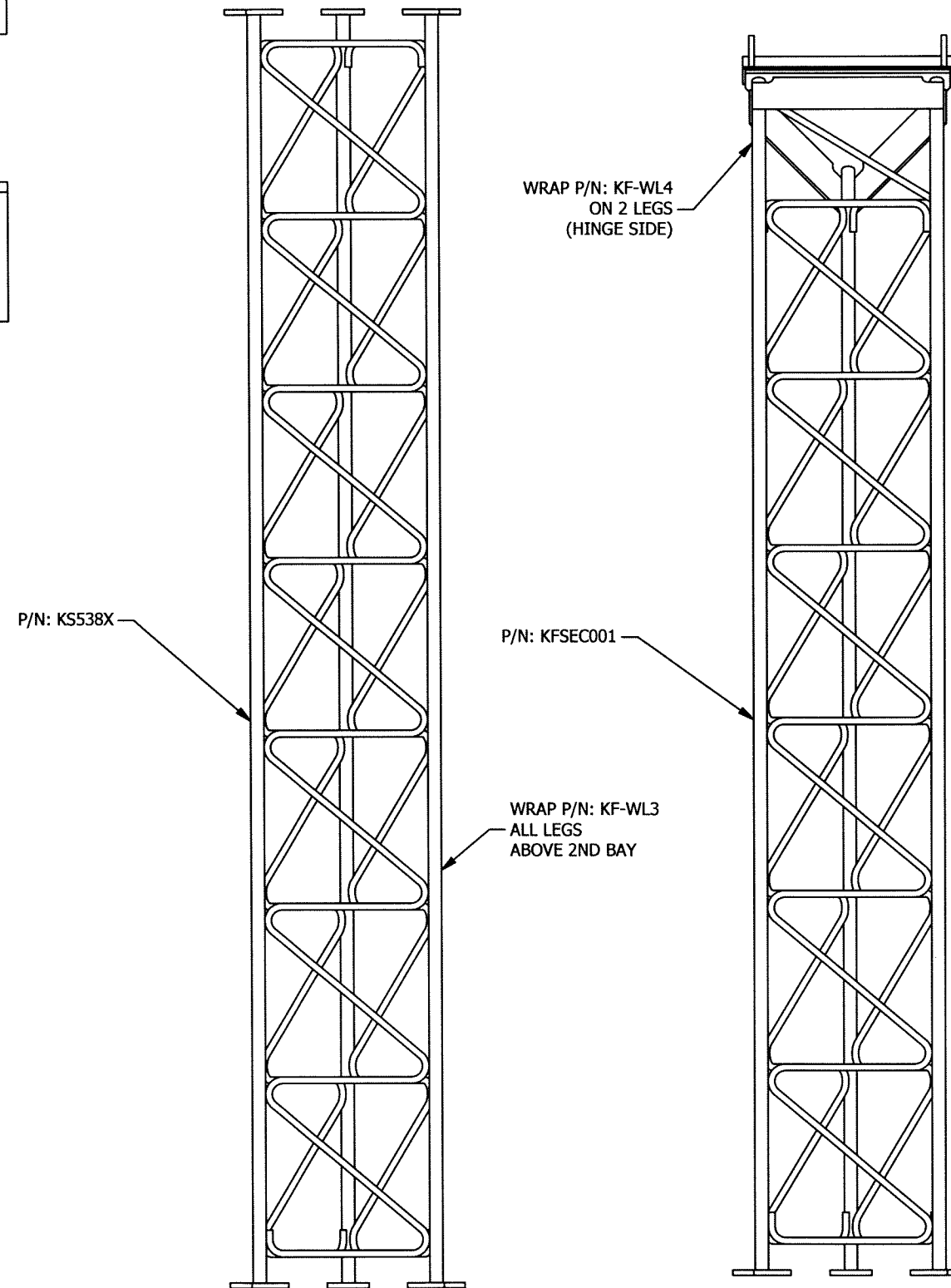
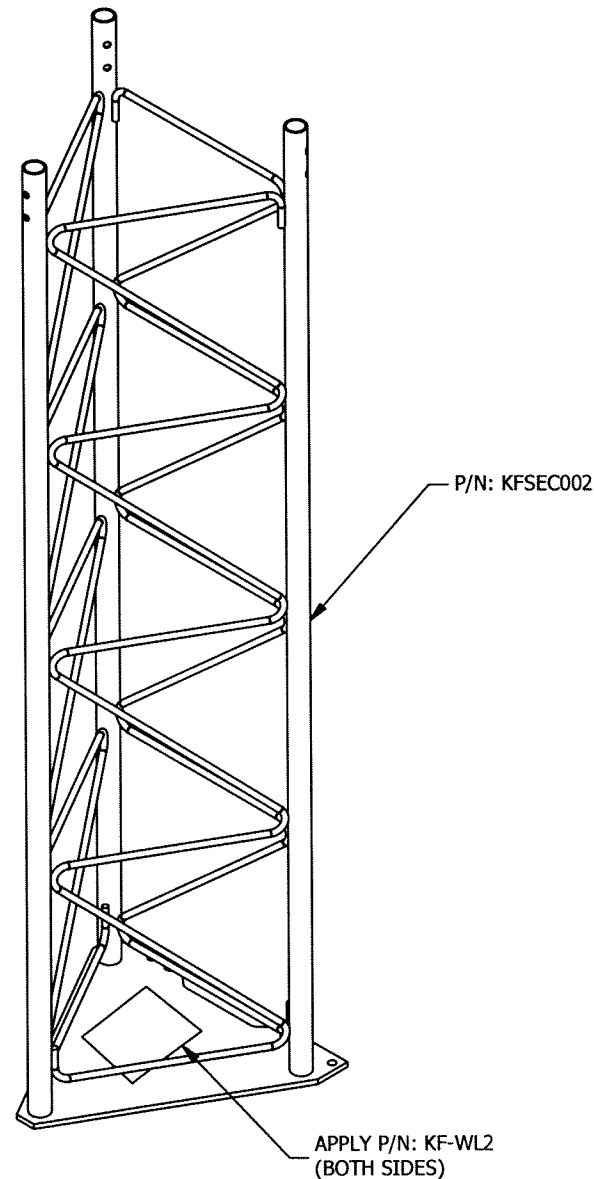
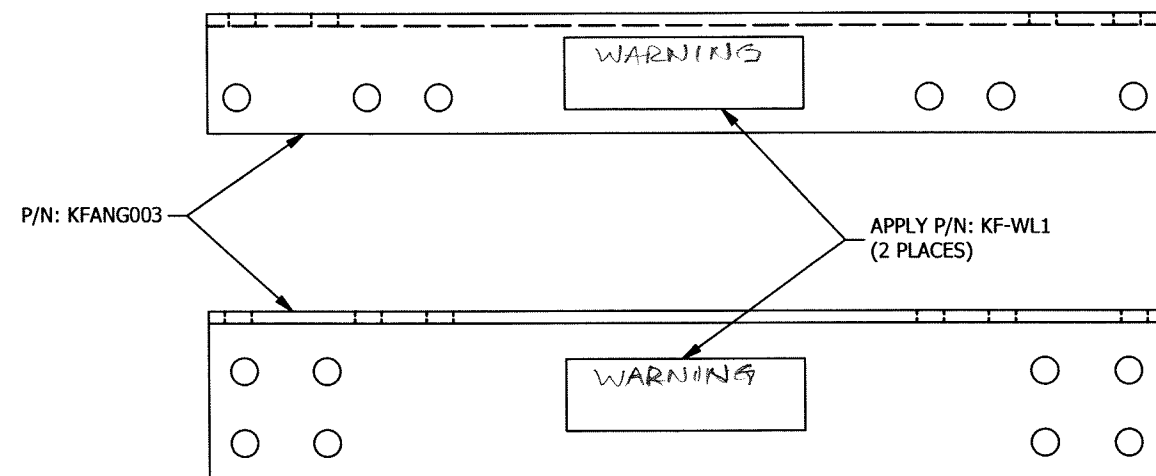
CHK'D:

DATE:  
5/17/2011

ENG'R:

DRAWING NO:  
KFWINCHA

REV:  
0



FILE NO.

FOR SAMPLE ONLY



P.O. BOX 5999  
PEORIA, IL 61601-5999  
TOLL FREE 800-727-ROHN

THIS DRAWING IS THE PROPERTY OF ROHN. IT IS NOT TO BE  
REPRODUCED, COPIED OR TRACED IN WHOLE OR IN PART WITHOUT  
OUR WRITTEN CONSENT.

# WARNING LABEL INSTALLATION DETAIL

DWN: LGC    CHK'D:    DATE: 5/17/2011

ENG'R:    REV: 0

DRAWING NO: DWG-0346    REV: 0